



3D Power-9372032805 www.3dpower.in

Project By



**vikas developers**  
*Symbol of quality & trust*

Office : 'Shree Dnyanesh Arcade', Opp. Sai Hospital, Samarth Nagar, Aurangabad.

Site Address

Plot No. 45, 46,  
Bearing C.T.S. No. 16294/56 &  
16294/54, Situated At Jay Nagar,  
Shahnoorwadi, Aurangabad.

Architects :

Manish Kale &  
Associates

Structural Consultant :

Vikas L. Chaudhary &  
Associates

Legal Advisor :

Adv. Subhash Malani  
Adv. Anand Umarikar

Rendering & Media :

Ranjit Patil - 3D Power

Contacts :

**776 780 0191, 976 446 6527, 982 203 4291, 776 780 0192, 776 782 3332**

॥ श्री ॥



**HOMES PROVIDING ENRICHED LIFESTYLE WITH  
CONCRETE PERFECTION!**

Disclaimer : This brochure is purely conceptual & not a legal offering. The plans, specifications, images & other details herein are indicative, furniture & accessories will not be provided by the developer & the developer / owner reserves all the rights to change. All dimensions mentioned in the drawings may vary / differ due to construction contingencies & site conditions. All dimensions are shown from unfinished surfaces. The printed material does not constitute a offer of any type between the developer / owner & the recipient. Any purchase / lease of this development shall be governed by terms & conditions of agreement for sale / lease entered into between parties & no details mentioned in this printed material shall in any way govern such transaction.

## 20 YEARS OF EXCELLENCE IN CONSTRUCTION INDUSTRY

We at Vikas Developers have great pride in expressing that we have always believed in building Best Quality Homes for our demanding customers.

We have always ensured use of Quality Materials and Best Technical standards to build The Dream Homes. In last 20 years we have delivered stand alone apartments in heart of the city, Group Housing Projects consisting 200 + tenements, Commercial & High Rise buildings in & around the Aurangabad City. We are totally focused on Quality Standards and most importantly, timely possession to our satisfied customers. For our commitments towards our work, we have been awarded with the most Prestigious Award: **“Developer of the City”**.

In our project **“Silver Crystal”**, we have tried to give best of living spaces with Quality Specifications & Standards. Since We Know **“VALUE FOR MONEY”** & for which our group is known as- *Symbol of quality & trust*.



2 BHK LUXURIOUS HOMES



A grand lifestyle, A symbol of grandeur and unparalleled comfort offering a unique taste of luxury living with a modern contemporary design, and a complete new concept that redefines intelligent urban planning.

Welcome To *Silver Crystal*, Homes That Ensures Top Notch

**STANDARD OF LIVING**



## ICONIC DESIGN

**Silver Crystal** is a state of the art iconic project by Vikas developers where luxury & harmony comes together. With an endeavor to focus towards property development & management, this project has been created with an endeavor to bring well developed residential projects, providing incomparable value & flexibility. Live life to the fullest and share the joys and happiness of being together @ **Silver Crystal**





## A GRAND LIFESTYLE

**Silver Crystal** is an exclusive collection of 2 BHK homes which exude charm, elegance and style, dedicated towards proving quality homes that provide a grand lifestyle to its residents and enhance their lives. Imagine living in a premium location, an extremely indulging and satisfying experience providing the ultimate feeling of urban contemporary living, a remarkable and unique lifestyle at your door step.







**CUT SECTION**



**TOP PLAN**



Unwind yourself to an experience so breath taking... it is sure to make you  
fall in love with the home you stay in where...

## **LIFE IS MEANT TO BE BEAUTIFUL.**

A project at par with high- class standards and cutting-edge  
infrastructure and a standard of living that aspires the best for its residents.



# Specifications

- **Structure** RCC framed structure External walls 6" & internal walls 4" in brick masonry work.

---

- **Plaster** Internal Gypsum finish.  
External Double coat sand faced plaster.

---

- **Flooring** Lobby, Hall, Dining, Kitchen, Bed Room & Passage 600x600 Kajaria vitrified tiles or equivalent.  
Master Bed Rooms - Wooden like flooring.  
Toilet Dado - 300x600 Kajaria wall tiles or equivalent.  
Stair Case Steps & Passage Natural stone / Vitrified Tiles.  
Main Entrance Foyer at Ground Floor - Natural stone / Vitrified Tiles.

---

- **Doors** Decorative main door with both side laminations with Godrej / Europa or Equivalent Latch.  
Toilet doors are of granite frame with FRP coated doors.  
Rest of the doors are flush door with both side lamination.

---

- **Windows** Powder coated aluminum sliding windows with mosquito net with safety grills & granite window sill on all 4 sides of windows.

---

- **Kitchen** Kitchen platform (10 Ft. length) in black granite with S.S sink with wall tiles up to ceiling level.

---

- **Toilet** Sanitary Fixtures - Standard.  
Plumbing Fixtures - Jaquar (ESCO- Builders range).

---

- **Electrical** Concealed wiring with modular switches (Roma, Anchor or equivalent).  
A.C. point in bedroom & inverter point in each room (Indoplast or equivalent).

---

- **Painting** Internal: Plastic emulsion paint of standard make.  
External: Premium quality acrylic paint.

---

- **Parking** Allotted Parking space covered with paving blocks / parking tiles / tremix.

---

- **Lift** Kone / Otis or Equivalent

---

- **Terrace** Brick bat coba water proofing at terrace.

---

- **Water Tank** One over head water tank & one underground water tank with separate partition for domestic use & drinking use water.

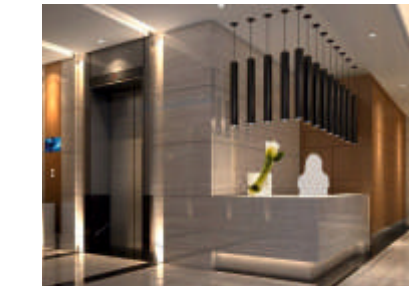
# Your Dream Amenities



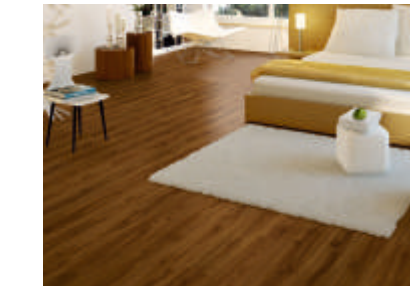
ALLOTTED CAR PARKING



A.C. (1.5 TON) FOR MASTER BED



EXECUTIVE ENTRANCE LOBBY



WOOD LIKE FLOORING FOR MASTER BEDROOM



CCTV – SECURITY FOR COMMON AREA



VIDEO DOOR PHONE



INVERTER FOR EVERY FLAT



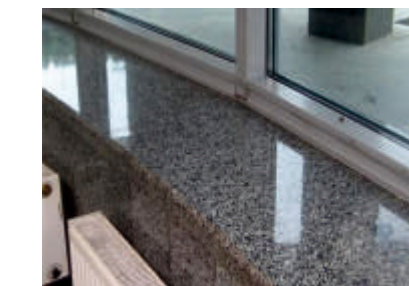
KITCHEN OTTA (10 FT.) WITH TROLLEYS



GENERATOR BACKUP FOR LIFT & COMMON AREAS



POP PUNNING FOR INTERNAL WALLS



GRANITE WINDOW SILL FOR ALL FOUR SIDES OF WINDOW



SAFETY DOOR FOR MAIN DOOR

## THE PLACE WHERE LIFE IS ENJOYMENT & BLESSING...



**Silver Crystal** enjoys a prime location and is strategically located around the best fitness clubs, schools, hospitals, shopping centers and all the major city attractions. A grand lifestyle awaits you here providing a unique blend of luxury & harmonious living.

